

Mounting instructions

Side bar series: GM - GC

eSprinter 2020+ (KL3A4)



SW13 (23 Nm)



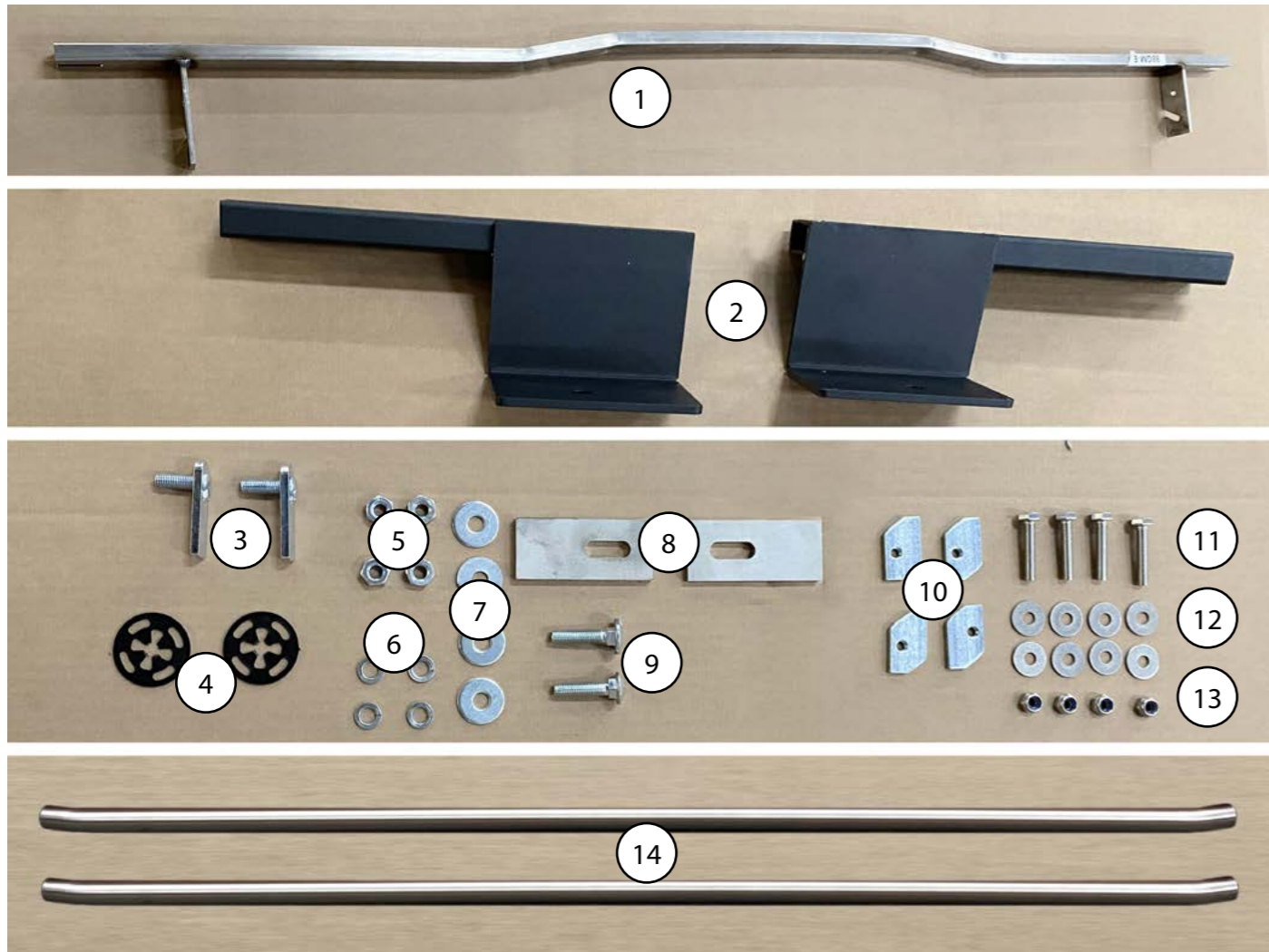
SW17 (46 Nm)



45 Min.



All safety aspects according to the eSprinter, which can be consulted in the building guidelines, must be taken into account while mounting the side bars.



Item number	Description	Quantity	Torque
1	Front bracket (Steel, galvanized)	1	
2	Rear bracket (Steel, black coated)	2	
3	M10x30 (5X20X60) HTC230	2	
4	M10 Clip HTC269	2	
5	M10 Hexagon nut DIN934	4	46Nm
6	M10 Spring lock washering DIN1278	4	
7	M10 Washer DIN9021	4	
8	Plate with slot hole 90X40X8 (30X11) HTCOR8	2	
9	M10X30 Carriage Bolt DIN603	2	
10	M8 Threaded plate HTCOR2	4	
11	M8X40 Hexagon bolt A2 DIN931	4	23Nm
12	M8 Washer A2 DIN9021	8	
13	M8 Hexagon lock nut A2 DIN985	4	23Nm
14	Sidebarbars Ø60X2mm 88 Series	2	



Fig. 1 Remove protection

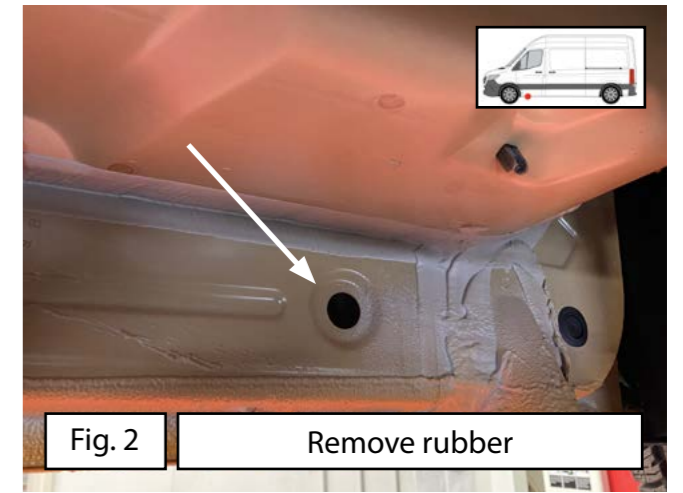


Fig. 2 Remove rubber



Fig. 3 Remove protection

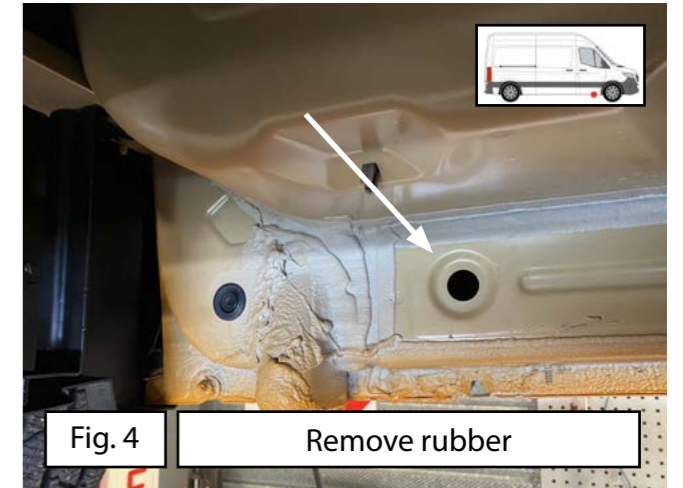


Fig. 4 Remove rubber

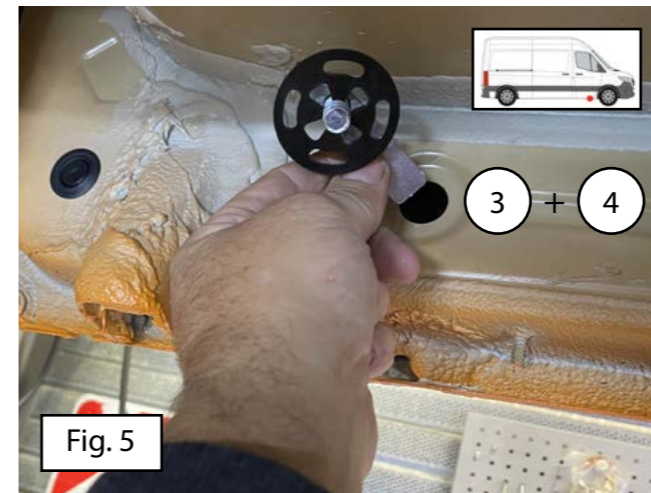


Fig. 5 3 + 4

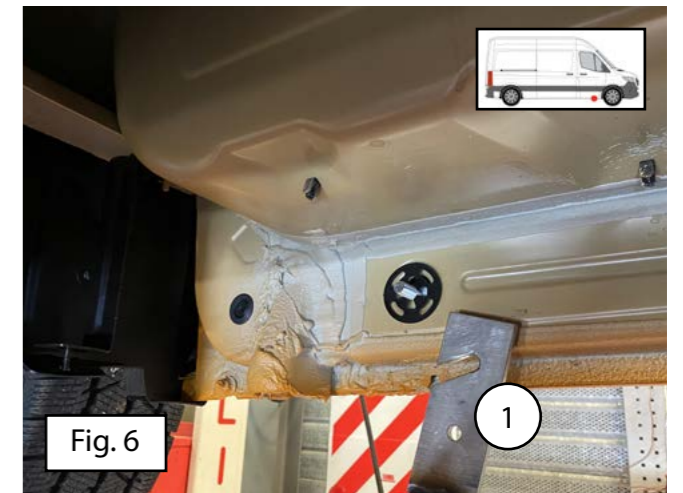


Fig. 6 1

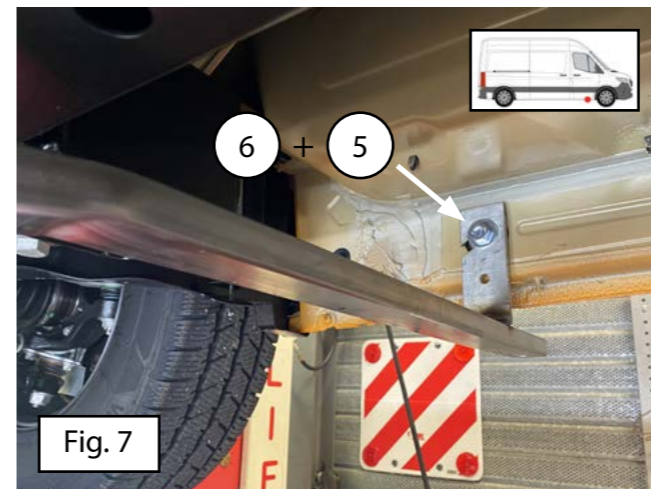


Fig. 7 6 + 5

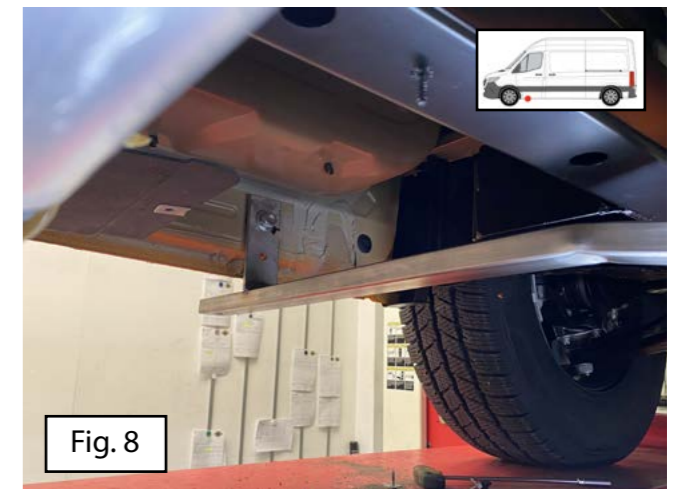


Fig. 8

